

# PROXI-CHEK™

Order online: ProxiChek.com  
By phone: 800.235.1863  
By fax: 770.423.4996



Black Double-Sided Film  
19 microns

PROXI-CHEK makes crown placement procedures both quicker and easier.

- Bendable tip easily marks posterior.
- Single-patient-use
- 45 per pack.

Product Code	Pack Size	Price
PROXI-CHEK	45 per Pack	\$25 <sup>00</sup>

Microcopy is also the maker of

# BITE-CHEK®

BiteChek.COM

Occlusion is fundamental to dental procedures and maintenance, so why not make it more efficient?  
BITE-CHEK — the perfect assistant for checking occlusion.

- Articulation film with easy-grip handle, no forceps needed.
- Single-patient-use.
- 100 per pack.



BC-Black  
Double-Sided Film  
19 microns



BC-Red/Black  
Double-Sided Film  
19 microns

### “No Questions Asked Guarantee.”

“We unconditionally guarantee your total satisfaction with the quality and performance of all our products. If you are not completely satisfied, we will pick up the product and gladly refund your full purchase price.”

# PROXI-CHEK™

## Get a Handle on Adjustments™

The only interproximal device that combines a precise mark of the contact with simplicity to eliminate the guesswork for properly fitting a crown.



“Saves time when fitting prosthesis by simplifying adjustments.”

Dr. Parag Kachalia DDS  
San Ramon, CA

**NEW**  
INTERPROXIMAL MARKER

800.235.1863  
PROXICHEK.COM

MICROCOPY

Microcopy  
800.235.1863 | P.O. Box 2017 | Kennesaw, GA 30156-9017

facebook.com/microcopydental @microcopydental

Prices effective August 2018  
ZPC0818

# PROXI-CHEK™



Double-Sided  
Black Film  
19 microns

## Family History



Since its inception in 1970, Microcopy has been at the forefront in developing safe and simple products for the dental industry. Our NeoDiamond line — America's #1 single-patient-use diamond—is among the most well respected in the dental marketplace. Our company continued that winning streak with the introduction of the NeoBurr carbides, NeoDrys super absorbents, Gazelle and Minnow nanocomposite polishers, and Bite-Chek articulation film. Quality and patient-safety have been the hallmarks of Microcopy since we began.

There's no question — Microcopy products and your practice are a winning combination.

Not every shoe fits on the first try. Similarly when placing a crown, not every crown fits the first time. When this occurs, the tight contact needs to be marked and adjusted. Some techniques for marking interproximal contacts involve painting the crown, using floss, or using a bulky articulation film holder that gets in the way of fitting the crown. None of these methods are quick and accurate processes.



However, a new, precise and easy to use interproximal marker is now available — *PROXI-CHEK* from Microcopy offers a simple way for dentists to accurately mark contacts for adjustment, to ensure complete marginal seating, maximizing efficiency and leading to more predictable results.

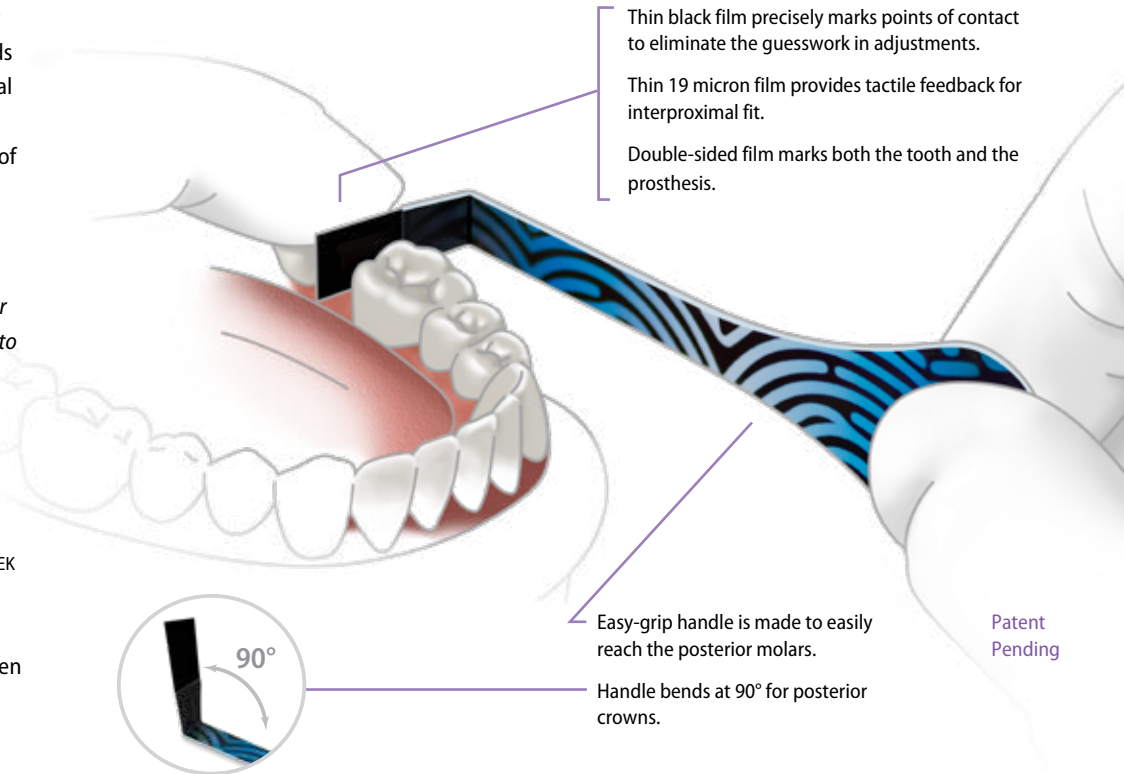
## Unique Handle Offers More Accessibility

PROXI-CHEK is the newest addition to Microcopy's family of single-use articulation products. Like BITE-CHEK®, which marks occlusion, PROXI-CHEK has a unique one-of-kind handle that makes marking interproximal contacts in all locations of the mouth extremely easy. In addition, the easy grip handle is bendable, allowing the user maximum visibility when marking while placing a crown.

## Precise Marks Produce Perfect Fitting Crowns

With PROXI-CHEK you can guarantee a visible and precise marking. Why? PROXI-CHEK uses a thin double-sided 19 micron film that leaves a black mark through friction just on the point of contact. With such a visible mark, it is easy to reduce areas where the contacts are "too tight" and make a broad, tight contact. In addition, PROXI-CHEK can mark on all types of prostheses and teeth. PROXI-CHEK will make placement procedures both quicker and easier.

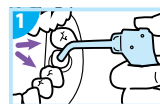
- ✓ Single-use, economical interproximal marker.
- ✓ Remove the guess and check work from seating a crown.
- ✓ Marks all types of crowns (zirconia, porcelain, lithium disilicate and metal).



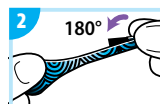
Patent Pending

## Instructions for Use

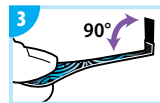
See all instructions at [microcopydental.com/proxichkek#instructions](http://microcopydental.com/proxichkek#instructions).



**1.** Dry prosthesis & tooth surface.



**2. Anterior:** use straight. **Posterior:** with crease facing up, pinch down for 2 seconds.



**3.** Release for a 90° angle.



**4.** Position film next to adjacent teeth & insert prosthesis. Slightly pull to create a mark.



**5.** Remove prosthesis. Adjust at mark. Repeat until prosthesis seats.

⊗ Single use